
Beautiful Exquisite Wooden Houses In Istanbul Slivri

493,386 GBP

Ref no: 1254

Villa for sale

Updated: 10 September 2018

Call Us Now for More information including whatâs up and viber +44 (0) 779 602 1227

Estate Features

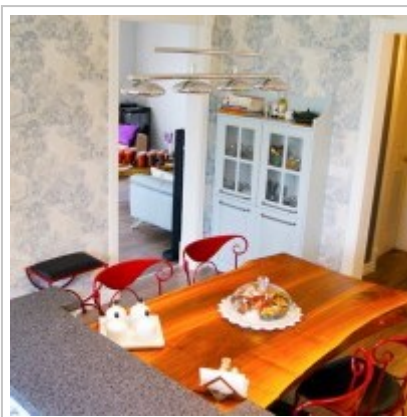
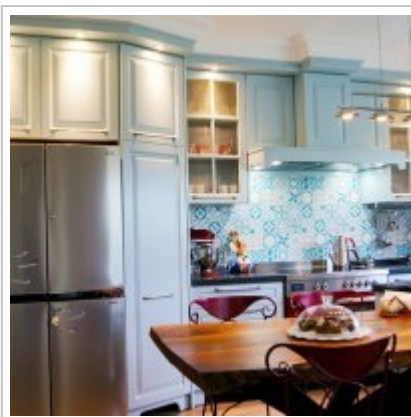
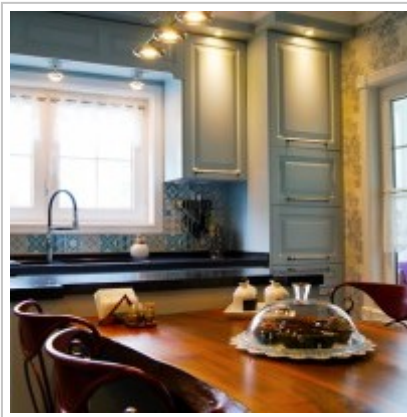
Living space sqm:	265
Bedrooms:	5
Bathrooms:	2
Floors:	2
Building year:	2006
Land size sqm:	805
Furnished:	None
Estate Type:	Permanent homes
Security:	24/7 Security Provided
Swimming pool:	Shared
Type of parking:	Private car park
Construction type:	Resale

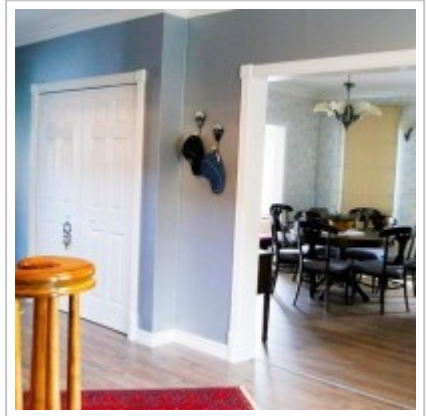
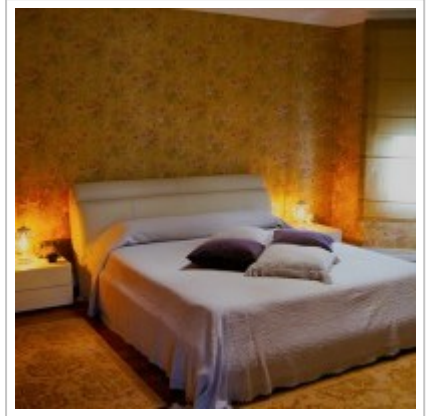
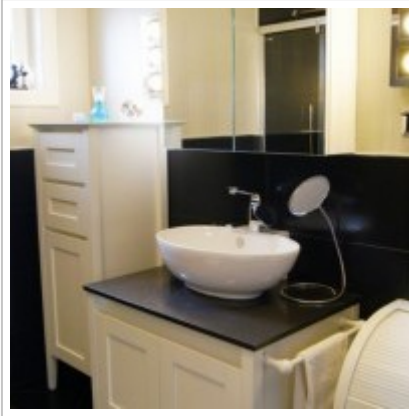
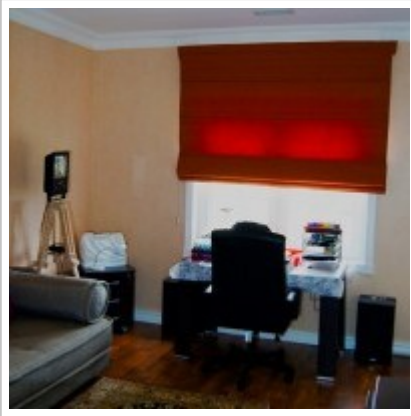
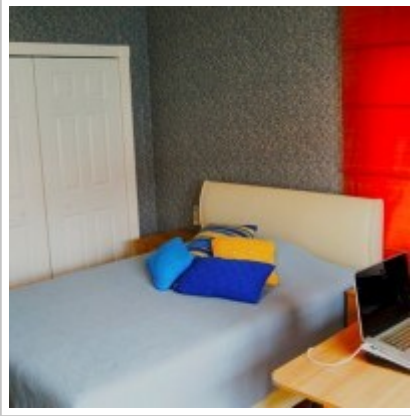


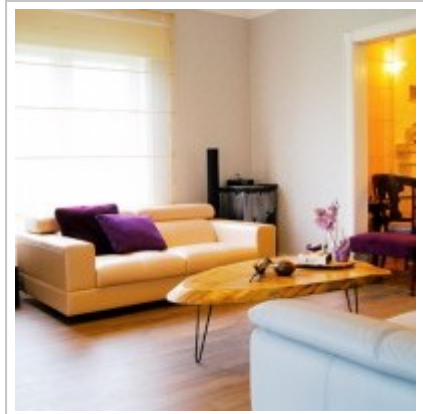
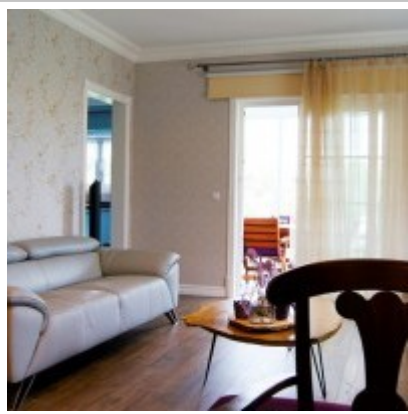
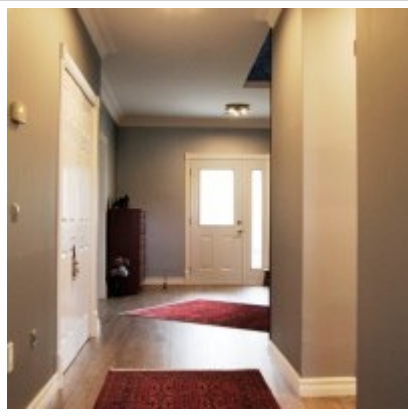
Description: Invest in a stylish house in the Istanbul province along the Sea of Marmara in Turkey. Do not miss this outstanding opportunity to purchase a luxury home outside of metropolitan Istanbul in quality surroundings at an exceptional price. Exceptional setting in a beautiful location and an ideal investment opportunity close to all amenities with everything on hand in a perfect location near to the coastline. About the project in Silivri, Istanbul This development offers an exceptional opportunity to purchase an exquisite house set in a beautiful area. The house 5 bedroom and had been developed by the highly respected and prestigious development company in Turkey, guaranteeing world-class quality with every house being finished to

the highest of standards. The houses are perfectly located close to public transportation, the beach, market, and various other exceptional facilities. About the location The houses sit on 1.2 km of coastline on the Marmara sea shore which is complete with beach and pier. There are restaurants, cafes, a Sports Center, market, hairdresser, soccer, tennis, basketball, volleyball and many other social areas to enjoy. Silivri is a city and district in the Istanbul province and contains many holiday homes for residents of the city. These houses could not be better located for future investment potential and prospects. During the summer months the population increases dramatically as this is a popular summer resort for many Istanbul residents due to the long coastline and perfect location to D100 highway and the E80 motorway that connect Turkey to Europe. Just half an hour from the city it makes an ideal place for people to retreat for some peace and quiet in the sun. Why invest in Silivri Istanbul now the third major airport for the Istanbul area is planned to be built in the Silivri district relieving the congestion at the current airports. It has been suggested that the new airport is to be built on the northern outskirts of the town making travel to and from this location even easier. Silivri is a popular tourist resort and as so should you buy one of these fabulous detached houses as an investment the rental potential will be huge.

Estate Images







Estates To Enquire About

Estates Turkey, Contact Us via telephone including whats up and viber + 44 (0) 779 602 12 27 or via email
info@estatesturkey.com

Copyright © 2018 Estates Turkey Limited. All Rights Reserved.

We use cookies to improve your experience. By your continued use of this site you accept such use. Please [see our policy](#).